



**30th Biennial Conference of ICKL
Beijing Normal University, China.**

**Dates: July 24-29, 2017
(Arrival July 23 / departure July 30)**

Hanting Hotel Beijing / Jishuitan Hotel

Hanting Hotel Beijing / Jishuitan Hotel is the most convenient hotel, just across the University.

We encourage attendees to choose this hotel, as there are not much possibilities around, and there is no Metro line close to the University.

ICKL will organize pre-booking on a **first come, first served basis**.

The hotel have around 100 rooms, so could host all attendees, but we cannot guarantee there will be rooms for latecomers. Furthermore, be aware that you will need to have a booking confirmation in order to apply for a visa.

See p. 3 – Pre-booking and Visa.

Website in Chinese: <http://hotels.huazhu.com/hotel/detail?HotelId=1000812>

Hanting Hotel is a chain hotel in China. The Hanting Hotel Beijing / Jishuitan Hotel is a newly built hotel, located No. 4 Xueyuan South Road, Haidian District, Beijing, across Beijing Normal University.

The hotel is approximately 15 minutes from Metro Line 2 (stop Jishuitan).

Check-in is normally after 2 PM (you may need to wait if arriving early).

Breakfast not included (18 RMB – approx. 2,50 euros / 2,65 US dollars)

Facilities

Free wifi in rooms

Restaurant and lounge area

Goods sales at front desk

Internet self-service in lobby

Luggage Storage

Room Facilities

Air conditioning

Free bottled water 24 hours

Electric kettle

Cable / satellite TV

Hair dryer

Complimentary toiletries

110V Voltage outlet

Wake-up Service

ONE BED STANDARD

15 m² / 161 sq. ft.
queen size bed

RATE

RMB: 407

Euros: 56

US Dollars: 59



ONE BED PREMIUM

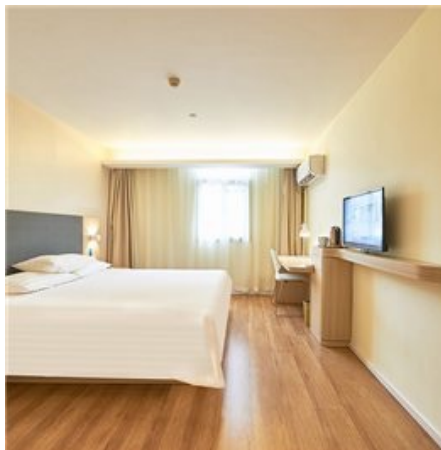
18 m² / 194 sq. ft.
king size bed

RATE

RMB: 428

Euros: 59

US Dollars: 62



TWO BEDS STANDARD

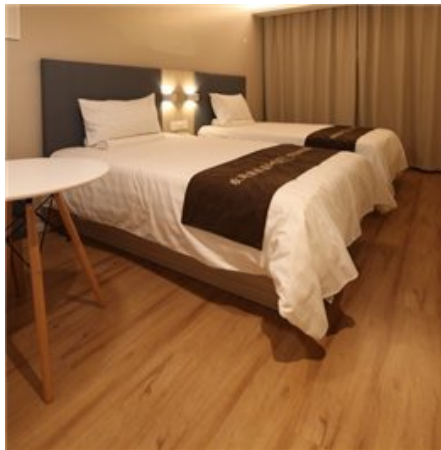
20 m² / 215 sq. ft.
two standard beds

RATE

RMB: 472

Euros: 65

US Dollars: 69



TWO BEDS PREMIUM

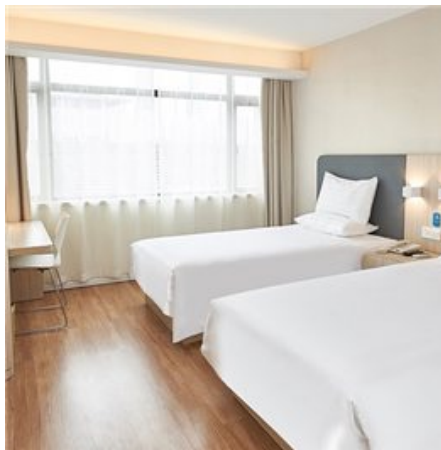
26 m² / 280 sq. ft.
two king size beds

RATE

RMB: 501

Euros: 69

US Dollars: 73



PRE-BOOKING

Hanting Hotel Beijing / Jishuitan Hotel does not provide international booking. We will ask you to pre-book through ICKL, with a fee corresponding approximately to one hotel night (59 € or 62 US \$), in order to secure your room. The pre-booking fee will be collected together with your conference registration fee (payment with a US check or with PayPal).

This pre-booking fee is non-refundable, should you cancel your travel.

You will have to pay cash the remaining amount onsite (the hotel cannot take non-Chinese credit card).

Please note that once you will have pre-booked, we will send you a confirmation from the hotel, that will be needed for your visa application.

Please note that we will book rooms on a first come, first served basis. If you send us your instruction and payment late, it will be your responsibility to look for another hotel.

The rates for rooms indicated are indicative, and may be slightly different up or down) in July.

Chinese attendees, please book directly your room.

SHARING A ROOM

If you are willing - or agreeing - to share a room with another attendee, in order to cut down expenses, please let us know very quickly. We will make our best to help you in finding a roommate.

Email as soon as possible to secretary@ickl.org, with your date of arrival/departure.

In case of shared room with another attendee, we will ask you anyway to pay individually the full pre-booking fee.

VISA APPLICATION

Please remember that you will need a visa in order to enter China, and that may need some time and administrative work, plus visa fees.

You should apply for a touristic visa. Please refer to Chinese embassies website for information (ex. <http://www.china-embassy.org/eng/visas/hrsq/> for US citizens).

Also consider applying through private offices organizing Visa applications. That can save you time.